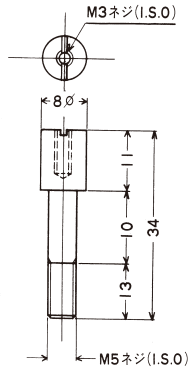


◆ 端子台用付属部品(カバー取付台) ◆

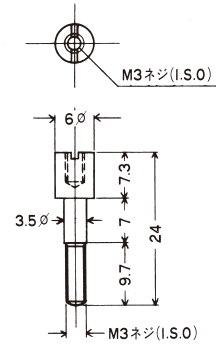
■ TC-17 材質：黄銅、ニッケルメッキ

適用端子台型番
TG11□



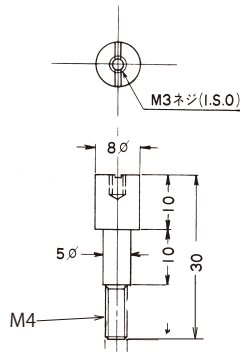
■ TC-18 材質：黄銅、ニッケルメッキ

適用端子台型番
TDM55□



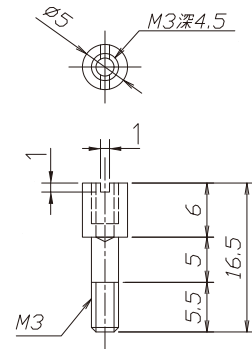
■ TC-19 材質：黄銅、ニッケルメッキ

適用端子台型番
TG11□



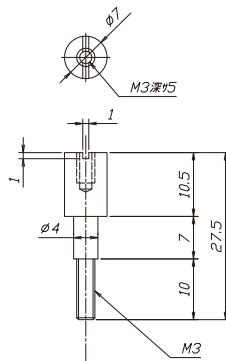
■ TC-21 材質：黄銅、ニッケルメッキ

適用端子台型番
TE20□



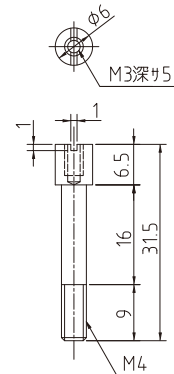
■ TC-23 材質：黄銅、ニッケルメッキ

適用端子台型番
TLP61□
TLP81□
TLP91□



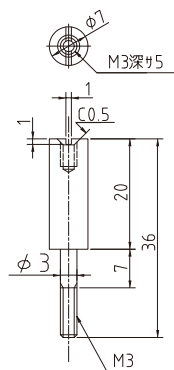
■ TC-36 材質：黄銅、ニッケルメッキ

適用端子台型番
TBU61□



■ TC-37 材質：黄銅、ニッケルメッキ

適用端子台型番
TBU51□
TBU61□



■ TC-38 材質：黄銅、ニッケルメッキ

適用端子台型番
TBU71□

